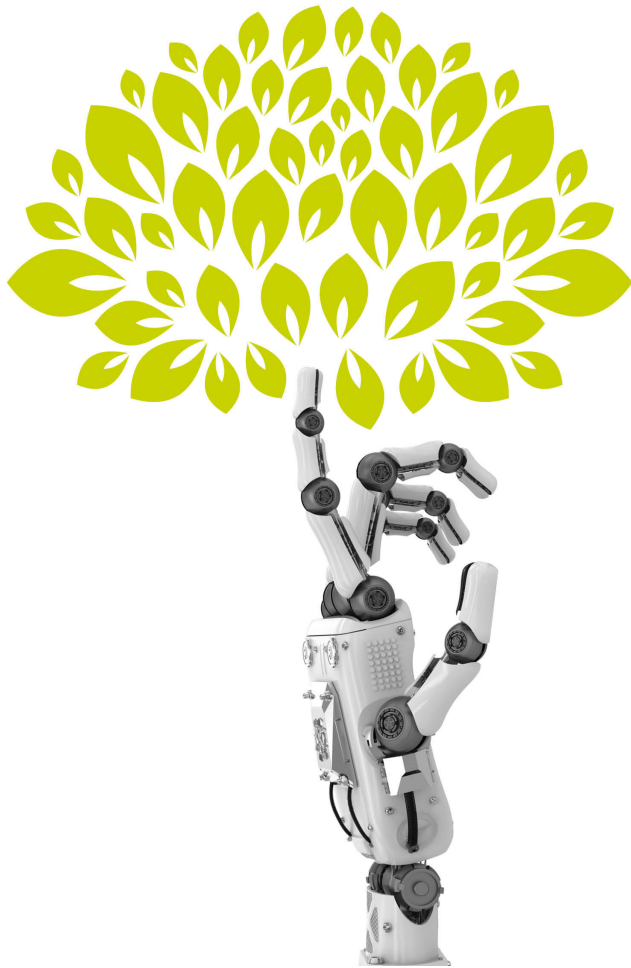


# EVERSHEDS SUTHERLAND



## **Growing strength**

Eversheds Sutherland strengthens its competency in commercial, contract and corporate law, mergers & acquisitions and private equity



## **Dr. Michael Mosimann** | Partner, Attorney at Law and Notary Public, Dr.iur., LL.M

Michael Mosimann is a member of the Corporate / Mergers & Acquisitions team and practices in the areas of M&A, contract law and commercial and corporate law. He is also a member of Eversheds Sutherland Switzerland's Startup Desk.

Michael has extensive experience in accompanying national and international investors in venture capital financing and private M&A transactions. Since he also frequently advises startups and their founders, he knows both sides of the investment process and conducts it in an efficient manner. He supports his clients throughout the entire investment process and during the holding period, at the exit and beyond. He is particularly interested in socially responsible investments (SRI) and in particular impact investments, on which he wrote his doctoral thesis.

In addition, he is an expert in regulatory and corporate legal matters pertaining to block-chain. He advises founders of cryptocurrency companies in all legal matters and helps them to plan, prepare and execute their private and public token offering (so-called Initial Coin Offering or ICO). He is a regular lecturer in his practice areas.

Michael completed his law studies at the University of Zurich in 2008 and a post-graduate study in Vancouver, Canada (LL.M., 2014). In 2018, he was awarded a doctoral degree (PhD) by the University of Zurich. He was admitted to the bar of the Canton of Zug in 2011.

He is a member of the Regulatory Working Group of the Crypto Valley Association and board member of the Swiss Impact Investment Association SIIA. He is also a member of the European Social Enterprise Law Association.

### **Practice areas**

Banking and finance

Commercial and contract law

Corporate

Merger and acquisitions

Notary

Private equity

Startup Desk

### **Contact details**

Eversheds Sutherland Ltd.

Stadelhoferstrasse 22, 8001 Zurich | Gotthardstrasse 26, 6300 Zug

T: +41 44 204 90 90

[michael.mosimann@eversheds-sutherland.ch](mailto:michael.mosimann@eversheds-sutherland.ch)

[LinkedIn](#)

[Add details to Outlook](#)

### **About Eversheds Sutherland**

Eversheds Sutherland is a global brand with 68 offices across Europe, Asia, Africa, the Middle East and the United States. In Switzerland, Eversheds Sutherland maintains offices in Zurich, Zug, Geneva and Berne. We provide our clients specialized guidance in the complexities of national and international law and deliver innovative and pragmatic solutions that add value.

Legal expertise, a commercial way of thinking and specific sector know-how are the cornerstones of our legal practice. Together with our global reach we are an ideal partner for legal services, wherever a business is located and whatever a business needs may be.